

HARKEN®

INSTRUCTIONS

Electric Furler Motor Housing Kit for Unit 2 or 3

H-73616 (12-volt) • H-73805 (24-volt)

USA – Tel: (+01) 262-691-3320 • Web: www.harken.com • Email: harken@harken.com

Italy – Tel: (+39) 031.3523511 • Web: www.harken.it • Email: techservice@harken.it

Included in Kit

Part No.	Qty	Description
H-73616 or H-73805	1	12- or 24-volt motor sealed into housing
	1	Parker hose 801 1/2 ID, 2' (610 mm)
	1	Hose clamp (316 stainless steel)
	4	M6 X 20 mm Socket head cap screw
	1	Large O-ring installed in top of motor housing
	1	Blue Loctite® adhesive

You will need

Metric hex key
Gasket scraping tool
Sealant cleaner
Plastic razor blade, plastic knife, or precision pry tools.
Silicone grease for O-ring. See pg. 2

IMPORTANT! Change electric components when switching between 12-volt and 24-volt systems or vice versa. Components are supplied separately.

System	Control box	Circuit breaker	Size
12-volt	BEB500.12.1	HCP1918	40 amp
24-volt	BEB500.24.1	HCP1917	30 amp

IMPORTANT! Remove all gasket material and all traces of sealant from this aluminum surface for a watertight bond using "O" ring on replacement housing.

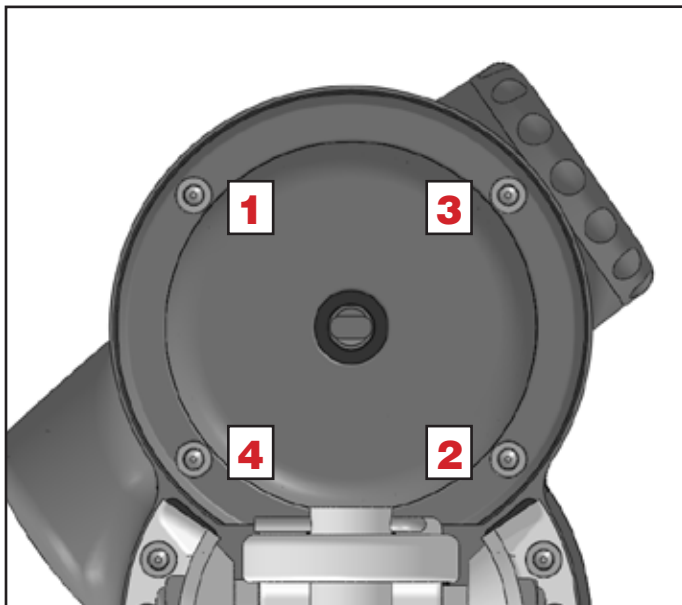
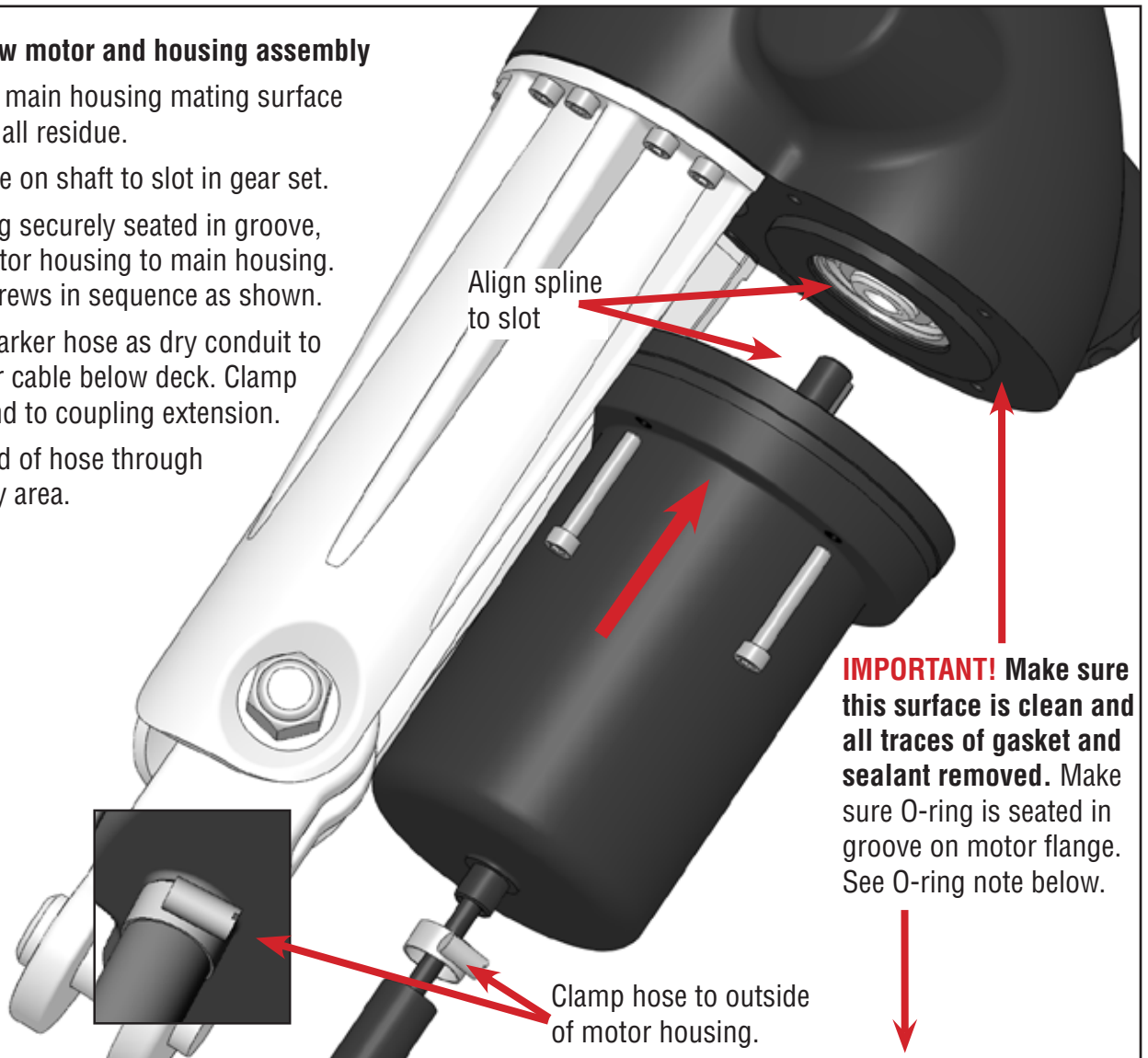
Main housing

Pry on this side of old gasket.

Be careful to not damage main housing. Use a plastic razor blade or plastic knife to carefully separate parts. Pry below the gasket shown so main housing is not damaged. If damage occurs, it will be to the motor housing, not the main housing. Clean main housing as directed above.

Installing new motor and housing assembly

1. Make sure main housing mating surface is clean of all residue.
2. Align spline on shaft to slot in gear set.
3. With O-ring securely seated in groove, secure motor housing to main housing. Tighten screws in sequence as shown.
4. Use 801 Parker hose as dry conduit to lead power cable below deck. Clamp forward end to coupling extension.
5. Run aft end of hose through deck to dry area.



IMPORTANT! Avoid tightening one side first. Tighten screws gradually working across to opposite side. See 1, 2, 3, 4 above.

IMPORTANT! O-ring must seat in motor flange groove. Reverse roll the O-ring before rolling it into groove and/or use a little silicone grease to hold O-ring in place as you fit the motor and housing onto the main housing .

