

Accessories You Can Purchase for the 150 Cam-Matic®

145



296



295



375



137



298



425

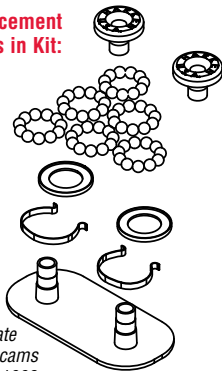
Yellow, Blue, Red, Green, Black

Cam-Matic® Cam Cleat Not Included

**150 Cam-Matic®
Rebuild Kit
150KIT**

HARKEN®

Replacement Parts in Kit:



*This baseplate
does not fit cams
built before 1993.*

Qty	Description	Qty	Description
2	Cam Cap	2	Torsion Spring
66	Delrin® Balls	1	Cam Base
2	Washer		

HARKEN®

INSTRUCTION SHEET

150 Cam-Matic® Rebuild Kit

N15W24983 Bluemound Rd., Pewaukee, WI 53072-4974 USA

Tel: (262) 691-3320 • Fax: (262) 691-3008

Web: www.harken.com • E-mail: harken@harken.com

Note: *Cam cleats built before 1993 have different baseplates. Cam caps and cam bases will not fit. Replace only balls, torsion springs and washers.*

You Will Need

Container to hold balls and cam parts during disassembly/assembly.
Soap and warm water to clean parts.

Optional: small amount of liquid detergent/shaving cream to keep balls in place on race.

Disassemble Cam

- Remove cam from deck.
- Take off red plastic baseplate. Carefully work one end up and then other.
- Remove torsion springs.
- Carefully put small bolt through fastener holes to remove red plastic cam caps.
- Lift cam off base, remove balls.
- Lift off red plastic washer.
- Remove remaining balls.

Replace Parts/Clean

- Replace plastic parts, balls and springs as needed.
- Wash parts using soap and hot water.

Reassemble Cam

No	Qty	Description	No	Qty	Description
1	2	Cam Cap	5	2	Washer
2	66	Delrin® Balls	6	1	Baseplate
3	1	Pawl (R)	7	2	Torsion Spring
4	1	Pawl (L)	8	1	Cam Base

Tip: When replacing balls use shaving cream or liquid detergent to keep balls in place on race.

- Put 11 balls in lower race.
- Put on red plastic washer, lip up.



Put on red plastic washer so lip is up.



Put 11 Delrin® balls in next race.

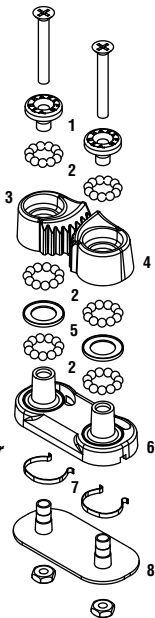
- Put 11 balls in next race.
- Replace aluminum pawl. Make sure it seats on balls.
- Fill cam top with 11 balls.
- Push in red plastic cam cap.
- Repeat on other cam as above.
- Turn cam over. Replace torsion springs. Hook each end of spring around posts.



Hook each end of torsion spring around posts.

Tip: Use two springs on each side to stiffen cam action or to act as a backup if first spring breaks.

- Push on red plastic baseplate. Plate is not symmetrical. Make sure to orient it correctly.
- Flush shaving cream/soap away using fresh water.
- Install cam on boat. Do not over-tighten mounting screws; pawls will bind.





Additional information:
www.harken.com/manuals

Video Demonstration

You can watch a video demonstration of rebuilding a cam at:

http://www.harken.com/Cam-Matic_Rebuild_Video/

Click on "Rebuild your 150 Cam Cleat" to play.

Maintenance

Harken equipment requires minimal maintenance, but some is required to give the best service and to comply with Harken's limited warranty.

It is important to keep equipment clean by frequent flushing with fresh water. In corrosive atmospheres, stainless parts may show discoloration around holes, rivets and screws. This is not serious and may be removed with a fine abrasive.

Important: Exposure to some teak cleaners and other caustic solutions can result in discoloration of part and is not covered under the Harken warranty.

Warranty

For additional safety, maintenance and warranty information see www.harken.com/manuals or the Harken® catalog.

Printed in USA 4685/03-13

Delrin® is a registered trademark of E. I. du Pont de Nemours and Company or its affiliates